



306/1 Victoria Street Roseville NSW

2  2  1 

The Uptown apartments are located in the heart of Roseville and are beautifully characterized by its leafy streets, private schools and peaceful village like atmosphere.

Roseville is regarded as one of Sydney's upper north shore premier neighbourhoods. The apartments are set within lush landscaped gardens designed by 360-degree landscape architects with a focus on privacy and soft screening.

SUPREMELY CONVENIENT LOCATION & MODERN LIFESTYLE

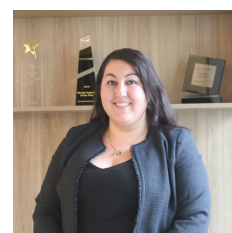
- 500 meters to Roseville Train Station; 20 minutes to CBD;
- 5 mins drive to Chatswood shopping centre
- Direct access to Chatswood and Roseville Central Retail

Price : \$680 pw

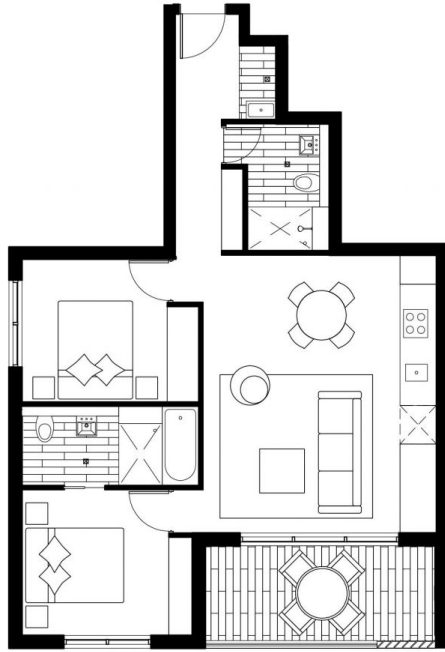
View : <https://www.belongrealty.com.au/lease/nsw/north-shore-upper/roseville/residential/apartment/6896441>



Jack Li
1300 669 667



Charlene Camilleri
1300 669 667



Disclaimer: This floor plan has been prepared for marketing purpose only and may be subject to change without notice accordance with construction. All graphics including layout are indicative only. Dimensions, areas, direction of entrance, window positions, fittings and finishes should refer to strata plan and floor plate. Fittings and finishes are subject to change in accordance with the contract of sale. Furnitures are not included. August 2015, B.



the UPTOWN

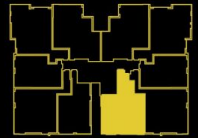
Roseville

F1.6 / F2.6 / F3.6

Level 1, 2 & 3

2 BEDROOM
2 BATHROOM
1 PARKING

Internal: 69m²
External: 9m²
Total: 78m²



1300 88 99 03

THEUPTOWN.COM.AU

