

Level 8/807/6-10 Gertrude Street Wollri Creek NSW

1 1 1

Contact me for appointment inspection!

With Cahill Park at your doorstep and Woolworths supermarket directly across the road, this is the perfect entry point into a thriving location for first home buyers or smart investors. Restaurants and Cafes in the Discovery Point plus Wollri Creek Train Station are just a 5 mins walk.

Features include:

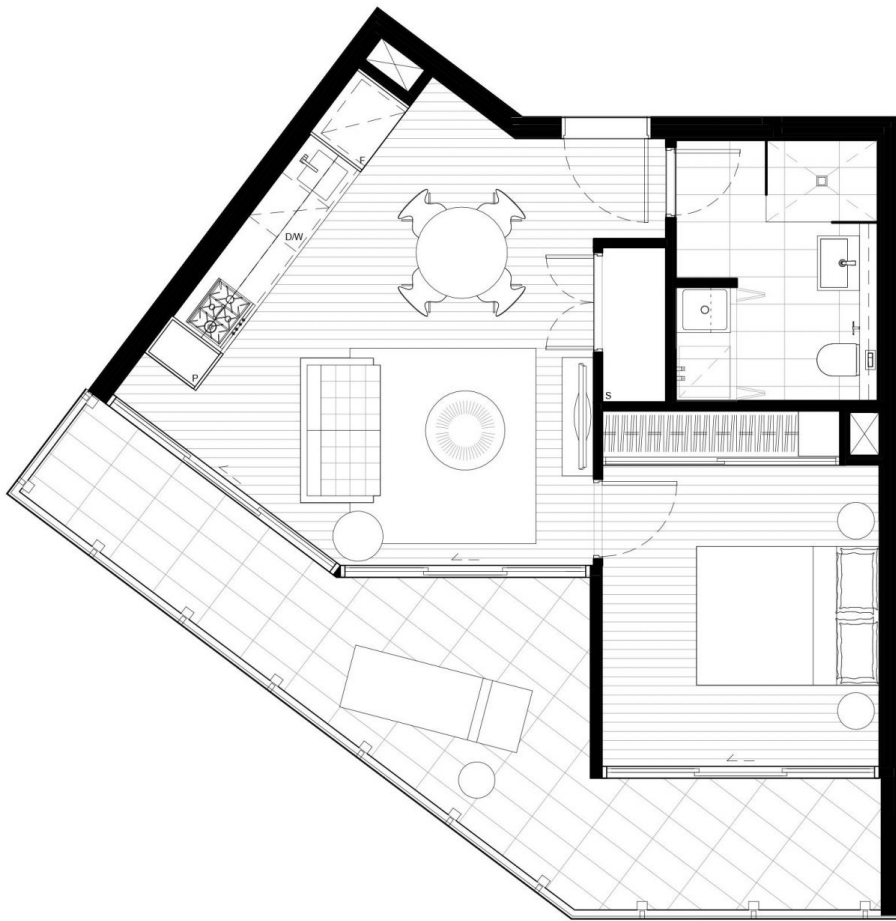
- Plenty of natural light
- Open plan living & dining area with ducted heating/cooling
- Gas cooking, stone benchtop, SMEG appliances & dishwasher
- Generous bedrooms w/ built-in wardrobes and air conditioning
- Frame-less glass shower, loads of bathroom storage & separate laundry

Price : Price guide \$605,000

View : <https://www.belongrealty.com.au/sale/nsw/st-geo/rge/wollri-creek/residential/apartment/6191450>



Jeffrey Yang
1300 669 667



1 bedroom + 1 bathroom + 1 car space

Total area 58 sqm

